

3.1 STOWAGE

- All the wooded cases were stored at warehouse before loading.
- Chamber top cone and VF were covered with tarpaulin.



Wooden cases were stored at warehouse before loading.



Cargo covered with tarpaulin

3.2 MARKING OF CARGO

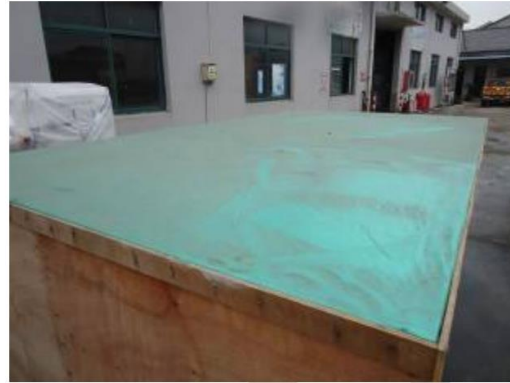
- Main shipping mark posted on surface.
- Auxiliary marks are in normal.



3.3 CARGO CONDITION BEFORE LOADING

Cargo condition was found during inspection at open yard and barge as below:

- All cargo was found without any damage.
- Dust and dirty stained on cargo package surface, affected all.



Dust stains on cargo surface before loading

4.0 LOADING OPERATION

Our surveyor checked all trucks prior to loading and found they are clean and dry, all is in satisfaction.



Condition of trucks before loading

All the wooden cases were loaded onto truck by forklift.



Loading wooden case onto truck is in progress



Loading wooden case onto truck is in progress

The chamber top cone and VF were loaded onto truck by mobile crane with soft slings/shackles.



Loading cargo onto truck by mobile crane

5.0 DISCHARGING

All wooden cases were discharged onto semitrailer by forklift.



Discharged cargo by forklift.

The chamber and VF were discharged onto semitrailer by fixed gantry crane with soft slings and shackles.



Discharged cargo by gantry crane.



Cargoes were discharged onto Mafi trailer.



Cargoes were discharged onto Mafi trailer.

4.0 PRE-LOADING INSPECTION

On the day of 29th Nov XXXX, prior to loading, the undersigned surveyor inspected the cargo condition at the open yard of Shanghai Haitong terminal and found as follow:

4.1 STOWAGE CONDITION BEFORE LOADING

- Chamber top cone and all wooded cases were stored at warehouse before loading.
- VF and CS frames were covered with tarpaulin at open yard before loading.

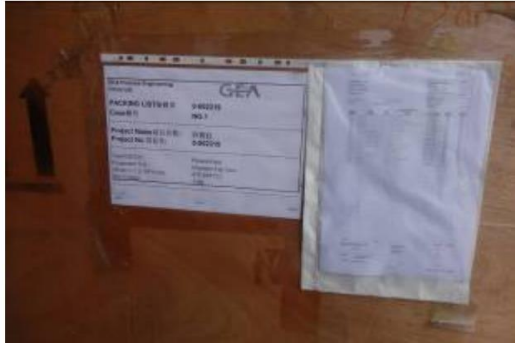
- After transferring operation, stacking condition of the twenty (20) packages in eight (8) mafi trailer. Detail as below:

No.:	Mafi trailer No.:	Case No.:
1	Mafi trailer GLOZ4130119	2/20 17/20 19/20
2	Mafi trailer CRTU4122389	1/20 3/20 4/20
3	Mafi trailer CRTU4117398	6/20 20/20
4	Mafi trailer SEKU4100320	5/20 14/20 15/20 18/20
5	Mafi trailer GLOZ4130314	16/20
6	Mafi trailer CRTU4151411	7/20 9/20
7	Mafi trailer RORO1140041	8/20 13/20
8	Mafi trailer CRTU4155675	10/20 11/20 12/20
Total		20



4.2 MARKING OF CARGO

- Main shipping mark posted on surface.
- Auxiliary marks are in normal.



4.3 CARGO CONDITION BEFORE LOADING

Cargo condition was found during inspection at open yard and warehouse as below:

- All cargo was found without any damage.
- Dust and dirty stained on cargo package surface, affected all.



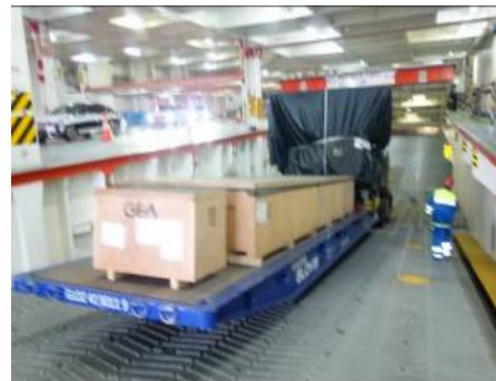
4.4 SECURING CONDITION BEFORE LOADING

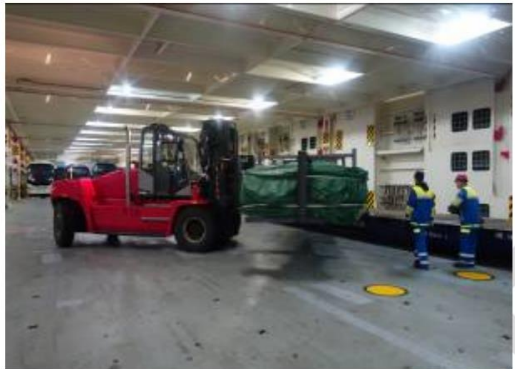
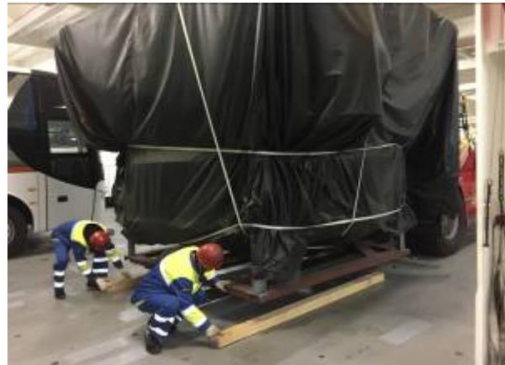
- All wooded cases were lashed with two (2) or three (3) lines lashing belts on Mafi trailer before loading.
- Chamber top cone, VF and CS frames were dunnage with wooden timber (100x10x10cm) at open yard and lashed with four (4) lashing belts before loading.



5.0 LOADING OPERATION

- Due to the vessel is Ro-Ro Ship, prior to loading, CMS surveyor checked the platform of stern (Capacity is 200T), and the platform of stern with the ground were fifteen (15) degree angle. The traction power of semi-trailer was 100T.
- When loaded the transformer MAFI surveyor asked the commander and driver as far as possible keep the level with horizontal direction.
- Twenty (20) packages in eight (8) mafi trailers were loaded on board by the tractor.
- All cargoes were discharged into hold no.3 on deck No.2 and No.3, port side by forklift.
- Stevedores operated smoothly without damage.





3.0 LASHING CONDITION

- Lashing material: Lashing belts (NBL5T), Chains (NBL 15T), Round sling (NBL 9T)
- Chamber top cone, VF and CS frames were dunnage with wooden timber (100x10x10cm).
- VF was secured on deck with total four (4) chains connect with eight (8) round sling (NBL 9T) at the lashing point.
- Static fluid bed was secured on deck by total eight (8) lashing belt (NBL5T).
- Frames were secured on deck by total eight (8) lashing belt (NBL5T).
- The wooden cases were secured on deck by lashing belts (NBL 5T), total two (2) or three (3) lines and protected with plastic plank

